



# GAT MONTHLY MEMBERSHIP PROGRESS REPORT

Results as of: 5/31/2023

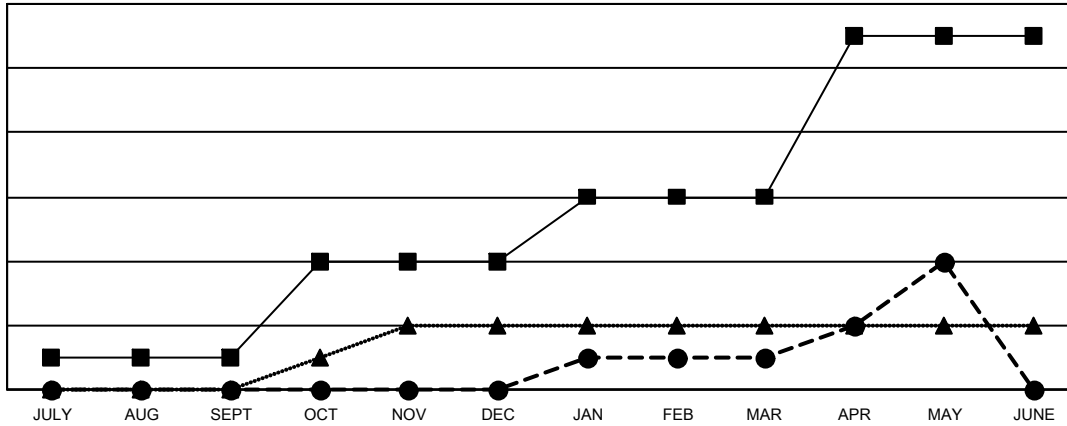
Multiple District 105

LOCATION: ENGLAND

| Clubs                 |               |           |               |
|-----------------------|---------------|-----------|---------------|
| RESULTS FOR 2022-2023 |               |           |               |
| QUARTER               | NEW CLUB GOAL | NEW CLUBS | DROPPED CLUBS |
| JULY/AUG/SEPT         | 1             | 0         | 6             |
| OCT/NOV/DEC           | 3             | 0         | 3             |
| JAN/FEB/MAR           | 2             | 1         | 7             |
| APR/MAY/JUNE          | 5             | 3         | 0             |

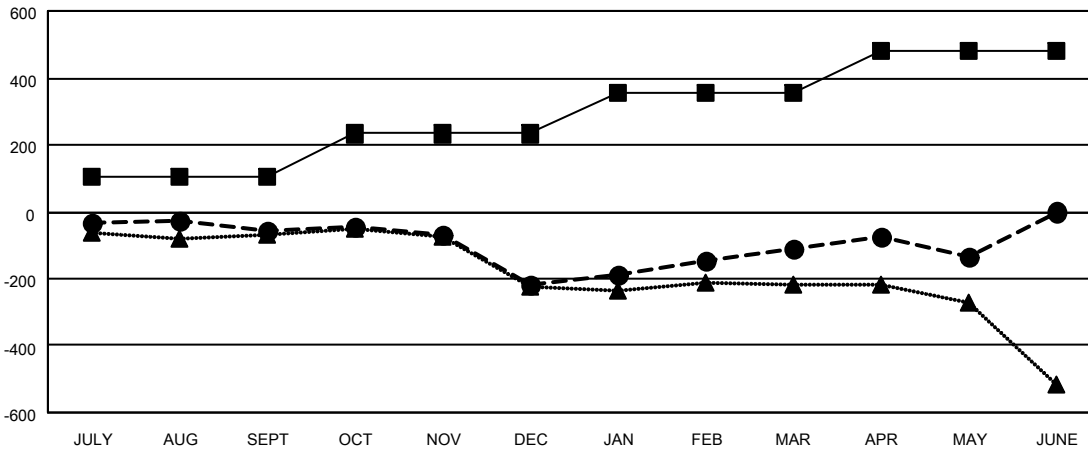
| Members               |                        |                      |  |
|-----------------------|------------------------|----------------------|--|
| RESULTS FOR 2022-2023 |                        |                      |  |
| QUARTER               | MEMBER GROWTH NET GOAL | MEMBER GROWTH ACTUAL | DROPPED MEMBERS ACTUAL (including transfers) |
| JULY/AUG/SEPT         | 104                    | 244                  | 269  |
| OCT/NOV/DEC           | 129                    | 256                  | 381  |
| JAN/FEB/MAR           | 122                    | 376                  | 236  |
| APR/MAY/JUNE          | 127                    | 229                  | 231  |

GOALS AND ACTUAL NEW CLUBS CUMULATIVE



- CURRENT YEAR GOALS FOR NEW CLUBS
- CURRENT YEAR ACTUAL NEW CLUBS
- ▲- LAST YEAR ACTUAL NEW CLUBS

GOALS AND ACTUAL MEMBERS CUMULATIVE



- MEMBER GROWTH NET GOAL
- MEMBER GROWTH ACTUAL
- ▲- LAST YEAR MEMBERSHIP ACTUAL

|                        |              |
|------------------------|--------------|
| DROPPED CLUBS: 16      |              |
| <b>DROPPED MEMBERS</b> |              |
| DECEASED               | 182          |
| CLUB CANCELLED         | 5            |
| OTHER                  | 930          |
| <b>TOTAL</b>           | <b>1,117</b> |

327 CLUBS OF 578 ADDED 1 OR MORE NEW MEMBERS

[CLICK HERE FOR CUMULATIVE MEMBERSHIP DATA](#)

| GENDER DISTRIBUTION                    |                |
|--|----------------|
| MALE                                   | 6,850 (69.18%) |
| FEMALE                                 | 3,050 (30.80%) |
| NON BINARY                             | 1 (0.01%)      |
| PREFER NOT TO ANSWER                   | 0 (0.00%)      |
| <b>TOTAL FAMILY UNIT MEMBERS</b>       | <b>1,353</b>   |
| <b>FAMILY MEMBERS PAYING HALF DUES</b> | <b>688</b>     |